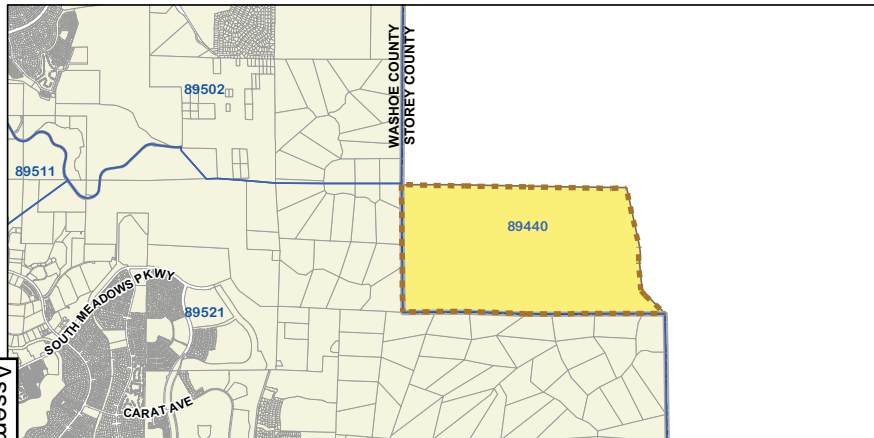


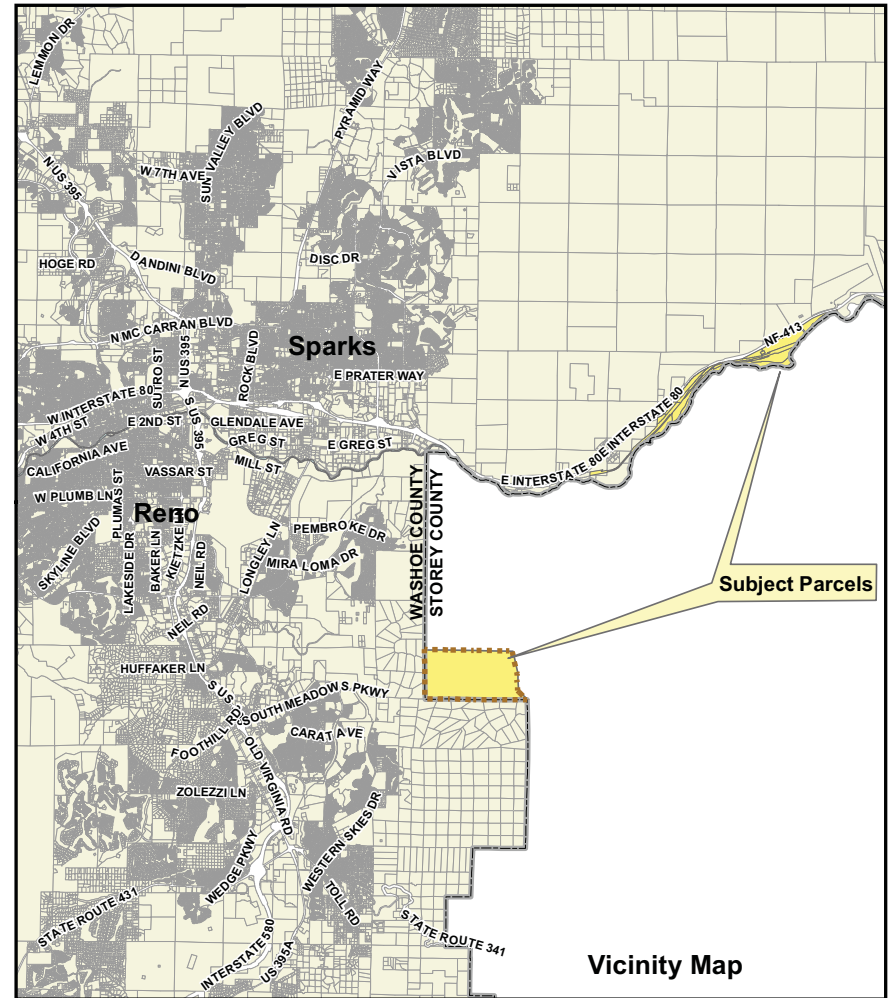
Proposed Storey County Land Acquisition



Proposed Washoe County Land Acquisition

ZipCode Boundary

SOURCE: WASHOE COUNTY TECHNOLOGY SERVICES/REGIONAL SERVICES DIVISION/GIS



DATE: MARCH 2013

SB 272



**TECHNOLOGY SERVICES
DEPARTMENT**

1001 E. Ninth St.
Reno, NV 89520



NOTE: THE SCALE AND CONFIGURATION OF ALL INFORMATION SHOWN HEREON ARE APPROXIMATE ONLY AND ARE NOT INTENDED AS A GUIDE FOR DESIGN OR SURVEY WORK. REPRODUCTION IS NOT PERMITTED WITHOUT PRIOR WRITTEN PERMISSION FROM THE WASHOE COUNTY TECHNOLOGY SERVICES DEPARTMENT.

T:\WC\DAT\Agenda\1\publicworks_msc\SB272_March_2013_11.617.mxd