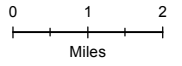




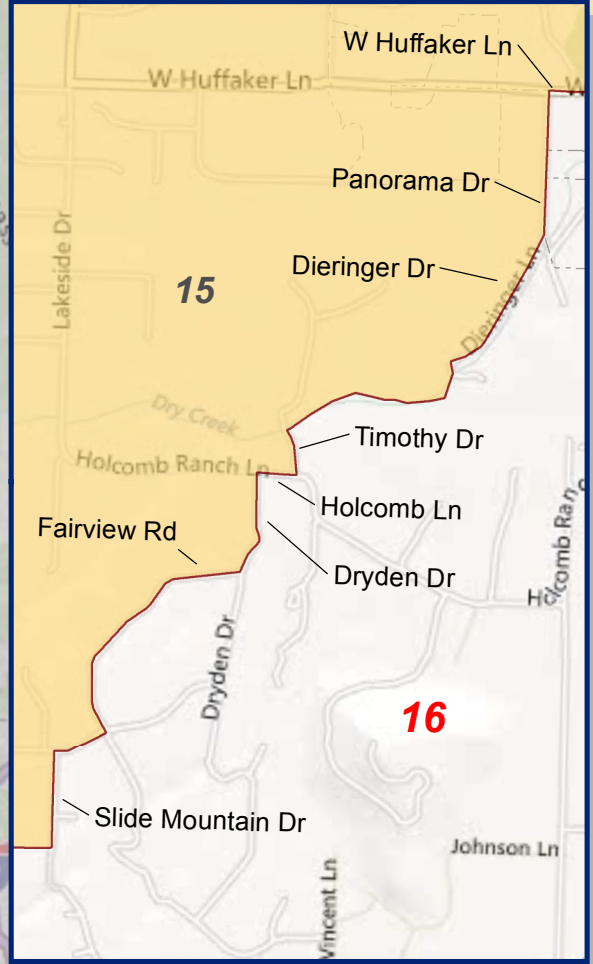
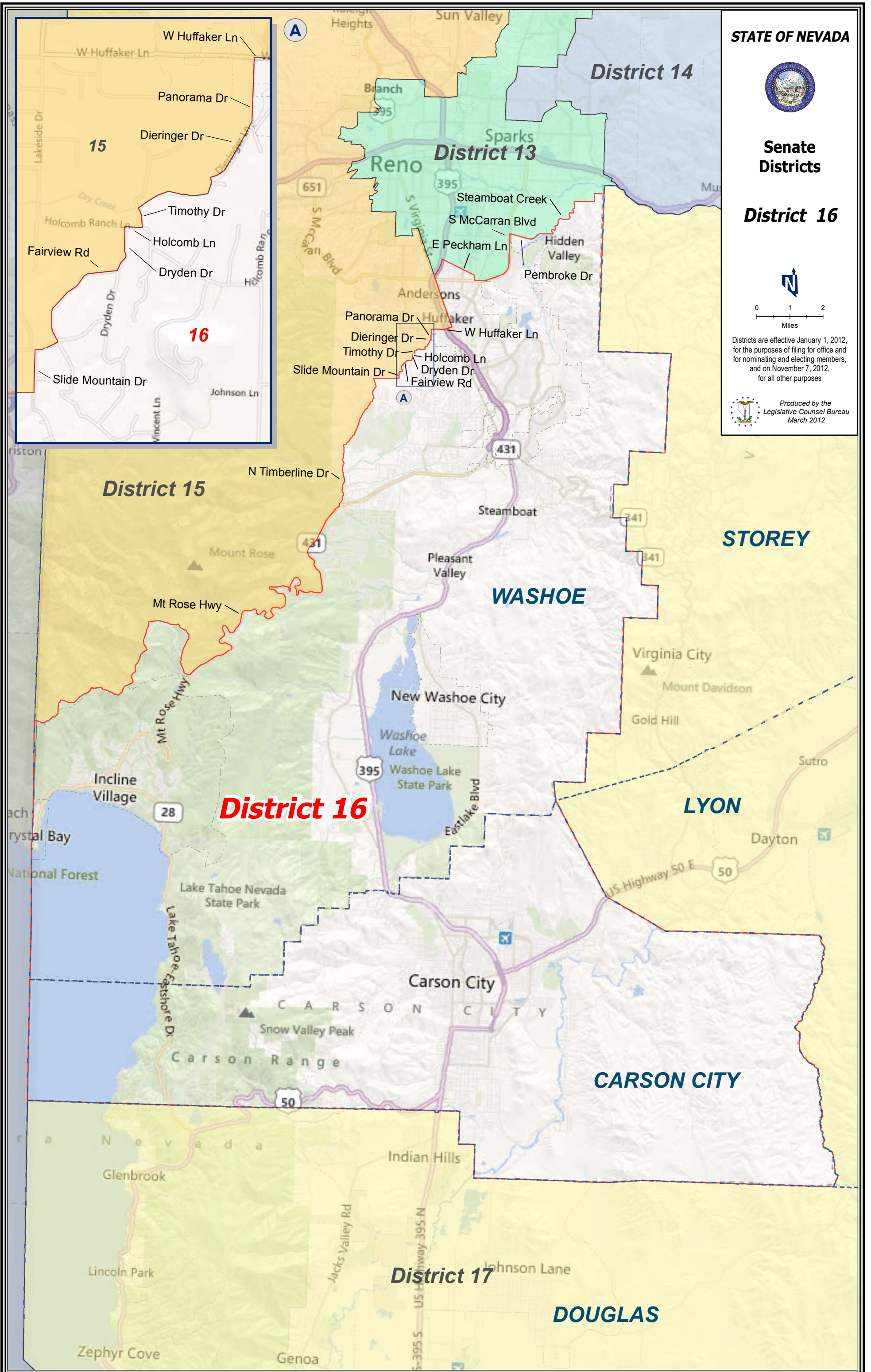
Senate Districts

District 16



Districts are effective January 1, 2012, for the purposes of filing for office and for nominating and electing members, and on November 7, 2012, for all other purposes

Produced by the Legislative Counsel Bureau March 2012



District 16

CARSON CITY

DOUGLAS

STOREY

WASHOE

LYON

District 17

District 15

District 13

District 14

15

16

A

District 17